

Worms and Worm Control

Both dogs and cats suffer from two types of worms:

TAPEWORMS are long, flat worms which break off into segments that appear stuck to the animals back end or on the surface of its motions, and look like grains of rice. Dogs and cats can get tapeworms from eating raw flesh from mice, rabbits or rats, or from having fleas which contain immature tapeworms.

ROUNDWORMS are spaghetti-like worms which can reach up to 6 inches long and live in the animals bowel. Their eggs are passed in the animals motions, but are too small to see with the naked eye. Adult dogs and cats get roundworms from eating raw flesh from rats, mice and other wildlife. Puppies and kittens get roundworms from their



mother and litter mates. They can infect puppies before birth by crossing from the mothers body through the placenta. Both puppies and kittens can be infected after birth by immature roundworms which come from the mother in her milk. By the time they reach their new home, puppies and kittens will have roundworms. Large numbers of these can cause severe illness and sometimes death. They damage the animals intestine and cause

stomach upsets, diarrhoea and a bloated belly. They can also damage the liver and lungs, causing poor growth and coughing. In extreme cases they can burst the bowel and cause death.

Some worms can be transmitted to humans, with rare, but potentially serious health consequences. Regular worming is the only practical method of avoiding this risk.

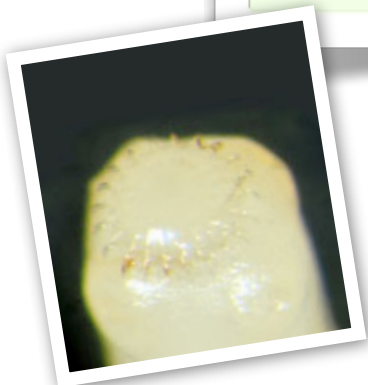
If you plan on traveling abroad with your pet, the law requires that they are wormed to prevent the spread of foreign parasites to the UK, as well as assure the safety of your pet. With regular worming, you can be confident that you are protecting your pet, and other peoples, from the effects of infestation.

HOW TO WORM YOUR PET

All puppies and kittens **MUST** be wormed to avoid serious illness. All adults should be wormed at recommended intervals to prevent infestation and transmission to other animals.

Worm preparations bought from pet shops and supermarkets should be avoided, as they often require multiple doses and are not always 100% effective.

We recommend using MILBEMAX worming tablets for your animal. These kill all British worms, including heartworms. We will need an up to date weight for your animal in order to dispense the correct dosage of worming tablets. This is given every six months in both dogs and cats. If your pet is an active hunter or scavenger, it is recommended you give the wormer more frequently, as re-infestation is more likely.



Care and Kindness For Your Pet

ABBAY VET CENTRE

2 Augusta St
Grimsby
NE Lincs, DN34 4TA